

# RFPRHTEMP2000A

## WIRELESS PRESSURE, HUMIDITY & TEMPERATURE DATA LOGGER

### Features

- Battery Life Indicator
- Digital Display
- Direct USB Interface
- AC Power connection via USB
- Configurable Alarms
- Ability to manually reset statistics
- 5 year battery life at 15 Minute Reading Rate
- NIST Traceable Calibration

### Benefits

- Digital Display Provides Instant Access to Current Readings and Statistics
- Minimal Long-Term Maintenance
- Readings Displayed in User Selected Measurement Unit
- Time and Money Saving with Battery Life Management
- Continuous Monitoring
- E-mail, Text Message and Audible Alerts Provide Assurance and Quality Control

### Applications

- Measuring Weather Data
- Warehouse Monitoring
- Measuring Barometric Pressure in High-Rise Buildings (Elevators)
- Clean Rooms
- Clinical Laboratories
- Growth Management in Mushroom Cultivation

The RFPRHTemp2000A is a wireless data logger that measures and records ambient pressure, humidity and temperature. This dynamic data logger is ideal for monitoring weather data, measuring barometric pressure in high-rise buildings or monitoring storage or warehouse environments that contain sensitive material. Clinical laboratories and clean rooms can utilize the RFPRHTemp2000A to measure and maintain critical pressure, humidity or temperature levels, all with one device.

The RFPRHTemp2000A features an LCD screen which provides instant access to the current reading, minimum, maximum and average statistics. Statistics can be reset directly on the keypad of the device, allowing customers to keep track of statistics over certain time periods. This feature does not erase the data recorded, and resets the statistics count. Other features include configurable alarms, battery life indicator and wall or surface mounting options.

This data logger allows users to select the desired units in which the data is displayed. The RFPRHTemp2000A has a wide range of units available for each channel: °C, °F, °R, K for the temperature channel, %RH, mg/mL, Dew Point for the humidity channel and mbar, PSI, inHg, mmHg, atm, Torr, Pa, m, kPa, MPa for the pressure channel. The unit is available for display on the LCD screen as well as in the software.

The RFPRHTemp2000A can be used as a standalone data logger, or used with the RFC1000 wireless transceiver to transmit data back to a central PC. The RFPRHTemp2000A transmits up to 500 ft line of sight to the RFC1000 transceiver. Multiple RFC1000s can be used as repeaters and transmit up to 1000 ft line of sight to other RFC1000s. This allows the data to be sent over a greater distance.

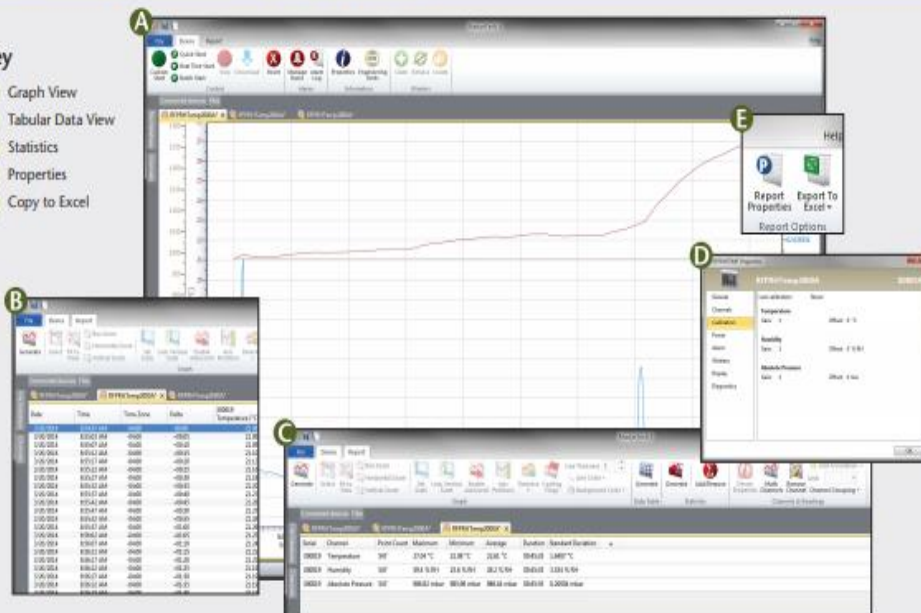
As with all MadgeTech 2000A wireless data loggers, the RFPRHTemp2000A can be used as a single wireless data logging system, or can be expanded to a large scale system, which can include hundreds of data loggers measuring different parameters such as temperature, humidity and more (additional MadgeTech wireless data loggers and transceivers may be required). The RFPRHTemp2000A utilizes the latest MadgeTech 4 Software. Data can be viewed in graphical or tabular formats and summary and statistics views are available for further analysis. The software features export to Excel®, data annotation, digital calibration and more.



## MADGETECH DATA LOGGER SOFTWARE

### Key

- A Graph View
- B Tabular Data View
- C Statistics
- D Properties
- E Copy to Excel



### Software Features:

- Multiple graph overlay
- Statistics
- Digital calibration
- Zoom in/ zoom out
- Lethality equations (F0, PU)
- Mean Kinetic Temperature
- Full time zone support
- Data annotation
- Min./Max./Average lines
- Data table view
- Automatic report generation
- Summary view