

RFOT WIRELESS MEAT TEMPERATURE DATA LOGGER

Features

- Wireless 2 Way Communication
- Splash proof (IP67)
- Real-time Operation
- Battery Life Indicator
- Programmable Start Time
- Memory Wrap Around
- Field Upgradeable Firmware

Benefits

- No Wiring
- Fast Installation
- Minimal Long-Term Maintenance
- Long-Term Field Deployment

Applications

- Meat Processing
- Meat Storage
- Smoke Houses
- HACCP Compliance
- Complying with USDA Regulations
- Food Process Monitoring

MadgeTech's RFOT is the most advanced wireless temperature data logger in the meat industry today. The RFOT's rugged design, equipped with a flexible piercing probe allows it to be used in the harshest environments. It is perfectly suited for smoke houses, ovens and other cooking processes up to 212 °F (100 °C) as well as refrigerators and freezers down to -4 °F (-20 °C). It is completely splash proof and can withstand wash down cycles. This state-of-the-art device records and transmits internal product temperature readings back to a central computer for instant real-time monitoring.

The RFOT never needs to be connected to a computer as it has been designed for two way wireless communication. All communication can be performed directly from a central PC. In addition to wirelessly transmitting data, the RFOT also stores each reading to internal memory for backup. This back up data may be retrieved wirelessly at a later time.

MadgeTech's easy to use software features user programmable critical control points, called "cooling flags" to assist in compliance with USDA Appendix B. The "cooling flags" are automatically annotated on the graph and tabular data views. The summary tab provides the cool down duration between each critical control point. The data can also be automatically exported to Excel for further calculations.

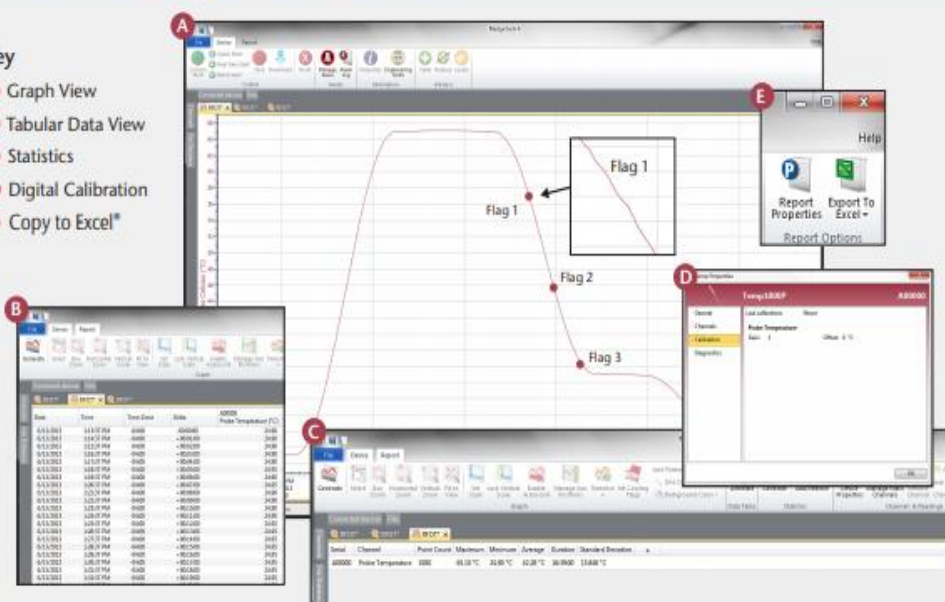
As the leader in low power data logger technology, MadgeTech continuously improves its products and develops solutions to meet ever-changing challenges. The RFOT was designed with our customers in mind. MadgeTech offers free firmware upgrades for the life of the product so that data loggers already deployed in the field can grow with new technological developments. Units do not need to be returned to the factory for upgrades. The user can do this automatically from any PC.



MADGETECH DATA LOGGER SOFTWARE

Key

- A** Graph View
- B** Tabular Data View
- C** Statistics
- D** Digital Calibration
- E** Copy to Excel®



Software Features:

- Multiple graph overlay
- Statistics
- Digital calibration
- Zoom in/ zoom out
- Lethality equations (F0, PU)
- Mean Kinetic Temperature
- Full time zone support
- Data annotation
- Min./Max./Average lines
- Data table view
- Automatic report generation
- Summary view
- Multilingual

